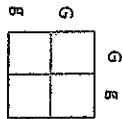


22 In fruit flies, gray body color (G) is dominant over black body color (g). What kind of offspring would you expect from parents who are both heterozygous for body color (Gg x Gg)?



- 0% gray, 100% black
- 25% gray, 75% black
- 75% gray, 25% black
- 100% gray, 0% black

23 John and Mary have three daughters. What are the chances that their fourth child will be a boy?

- 1 out of 8 (12.5%)
- 3 out of 4 (75%)
- 1 out of 4 (25%)
- 1 out of 2 (50%)

24 In pigeons, the allele R produces red feathers. The allele r produces blue feathers.

A heterozygous pigeon is crossed with a homozygous recessive pigeon. What percent of the offspring are expected to have red feathers?

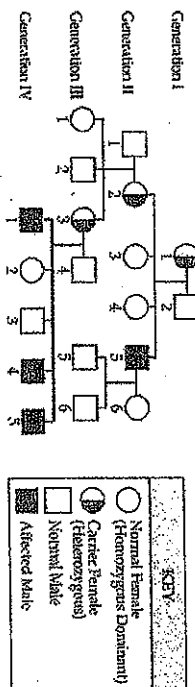
- 0%
- 25%
- 50%
- 100%

25 In dogs, brown fur (B) is dominant to white fur (b). Which of these Punnett squares shows a 50% chance of having a puppy with white fur?



26 Use the information in the pedigree to answer the following question.

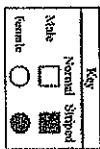
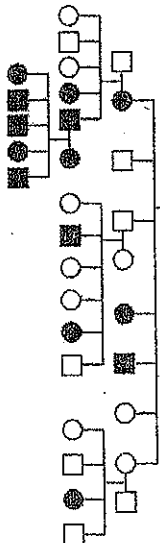
COLORBLINDNESS PEDIGREE



How many individuals have red-green colorblindness in the fourth generation shown in the pedigree?

- 3
- 4
- 7
- 12

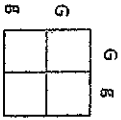
27 The pedigree showing the inheritance of a gold dorsal stripe pattern in ball pythons is shown below.



According to the pedigree, what type of trait is this stripe pattern in ball pythons?

- Co-dominant
- Dominant
- Recessive
- Sex-linked

22 In fruit flies, gray body color (G) is dominant over black body color (g). What kind of offspring would you expect from parents who are both heterozygous for body color (Gg x Gg)?



- 0% gray, 100% black
- 25% gray, 75% black
- 75% gray, 25% black
- 100% gray, 0% black

23 John and Mary have three daughters. What are the chances that their fourth child will be a boy?

- 1 out of 8 (12.5%)
- 3 out of 4 (75%)
- 1 out of 4 (25%)
- 1 out of 2 (50%)

24 In pigeons, the allele R produces red feathers. The allele r produces blue feathers.

A heterozygous pigeon is crossed with a homozygous recessive pigeon. What percent of the offspring are expected to have red feathers?

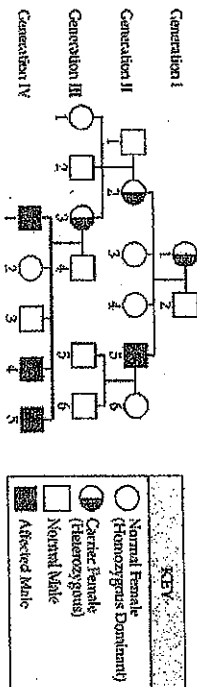
- 0%
- 25%
- 50%
- 100%

25 In dogs, brown fur (B) is dominant to white fur (b). Which of these Punnett squares shows a 50% chance of having a puppy with white fur?



26 Use the information in the pedigree to answer the following question.

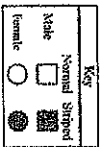
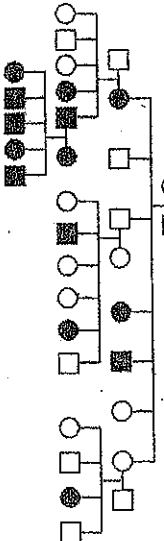
COLORBLINDNESS PEDIGREE



How many individuals have red-green colorblindness in the fourth generation shown in the pedigree?

- 3
- 4
- 7
- 12

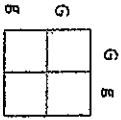
27 The pedigree showing the inheritance of a gold dorsal stripe pattern in ball pythons is shown below.



According to the pedigree, what type of trait is this stripe pattern in ball pythons?

- Co-dominant
- Dominant
- Recessive
- Sex-linked

22 In fruit flies, gray body color (G) is dominant over black body color (g). What kind of offspring would you expect from parents who are both heterozygous for body color (Gg x Gg)?



- a. 0% gray, 100% black
- b. 25% gray, 75% black
- c. 75% gray, 25% black
- d. 100% gray, 0% black

23 John and Mary have three daughters. What are the chances that their fourth child will be a boy?

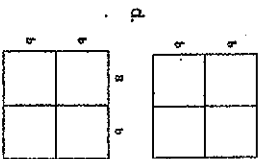
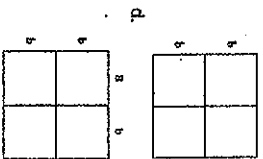
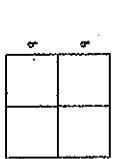
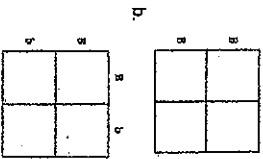
- a. 1 out of 8 (12.5%)
- b. 3 out of 4 (75%)
- c. 1 out of 4 (25%)
- d. 1 out of 2 (50%)

24 In pigeons, the allele R produces red feathers. The allele r produces blue feathers.

A heterozygous pigeon is crossed with a homozygous recessive pigeon. What percent of the offspring are expected to have red feathers?

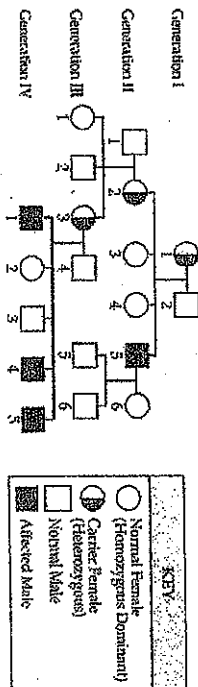
- a. 0%
- b. 25%
- c. 50%
- d. 100%

25 In dogs, brown fur (B) is dominant to white fur (b). Which of these Punnett squares shows a 50% chance of having a puppy with white fur?



26 Use the information in the pedigree to answer the following question.

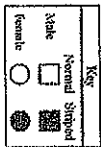
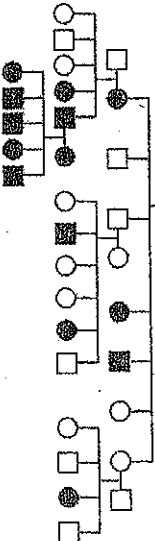
COLOBLINDNESS PEDIGREE



How many individuals have red-green colorblindness in the fourth generation shown in the pedigree?

- a. 3
- b. 4
- c. 7
- d. 12

27 The pedigree showing the inheritance of a gold dorsal stripe pattern in ball pythons is shown below.



According to the pedigree, what type of trait is this stripe pattern in ball pythons?

- a. Co-dominant
- b. Dominant
- c. Recessive
- d. Sex-linked